



**Cell Function Enhancement** using clinically proven technology

## Pain is unavoidable. Choose to suffer less.

It is well documented that poor pain control leads to the triple jeopardy of declining health, reduced mobility and increasing social isolation.

It is equally well known that many pain sufferers in particular, end up being over-medicated and under-treated, because their treatment deals with blocking pain signals to the brain (the symptom), rather than dealing with the problem at a cellular level (the cause).

The cause of pain, which is generally due to impaired cell function, is the area of treatment that **PainSolv** products concentrate on helping in. This same principle applies to Wound and Stress conditions.

Now you have the chance to give yourself to opportunity to enjoy life again control of your life again with the **PainSolv Cell Function system** which works to complement your body's immune system, employing clinically proven technology to bring you lasting relief.

### Good Cell Function is vital

The human body relies on a healthy cell network to avoid poor circulation, declining performance, premature ageing and degenerative diseases.

Normal cell functioning and energy levels can be achieved with the use of pulsating electromagnetic fields that actively stimulate metabolism in cells, increase oxygen absorption and accelerate the removal of toxic chemicals and waste. This empowers the body to recover its self-healing capabilities.

Constant wave low level lasers and static magnets have never been proven to penetrate the skin.

Clinical research carried out for NASA proved that millisecond duration pulsed electromagnetic fields have the greatest beneficial effect on living tissues over any other energy form.

Almost all illness is the result of impaired cellular function.

A healthy cell operates at a voltage between 70-110mV in order to produce ATP molecules (Adenosine Triphosphate), which are vital for a healthy body.

When someone suffers a trauma or illness of any kind then cell function is compromised to varying levels, depending on the overall fitness and health of the individual concerned.

In this type of occurrence, the body may need help to enable it to maintain the necessary levels of cell activity.

This in turn helps to reduce pain and inflammation, actively encouraging the healing process, reducing stress-induced pain and discomfort that

traumas or wear and tear inevitably bring.

The **PainSolv** product range comprises medical devices and topical applications for the treatment of Pain, Wound and Stress related conditions using clinically proven technology.

### Innovative, portable health management for all ages without side-effects

#### 1 Pain



Pain Relief from conditions such as Arthritis, Joint problems, Carpal Tunnel Syndrome, Repetitive Strain Injury, Tennis Elbow, Sprains and Period Pain

#### 2 Wound



Effective relief from the inconvenience of Leg Ulcers, Pressure Sores, Diabetic Heel Ulcers, Bone Fractures, Psoriasis, Eczema, Varicose Veins

#### 3 Stress



Welcome relief from Stress, Insomnia, Migraine, Sleep Disorders, inability to relax, poor Immune System function, Jet Lag, effects of viruses



**Cell Function Enhancement** using clinically proven technology



## PainSolv 3-in-1 Medical Device for Pain, Wound and Stress Conditions

### What it does...

**PainSolv** influences cell behaviour by inducing electrical changes around and within the cell wall membrane by penetrating body tissue with pre-programmed pulsed field magnetic therapy delivered through patented software algorithms. The resulting improved blood supply increases oxygen pressure, which activates and regenerates cells

### How it Works...

The **PainSolv** system encourages your body's self-healing capabilities by enhancing the efficiency of introducing essential chemicals and proteins into the blood stream, simultaneously increasing the oxygen content of your blood to help transport these vital ingredients to combat all manner of physical problems, with a gentle, non-invasive, painless therapy.

### Extra Benefits...

**PainSolv** will also encourage production of natural antioxidants to hamper and even stop the process of free radicals proliferation within the body. Free radicals are dangerous and can cause serious damage to your health as they cause almost all major diseases if unchecked.



**Cell Function Enhancement** using clinically proven technology

## How PainSolv works with your immune system

**PainSolv** influences cell behaviour by inducing electrical changes around and within the cell wall membrane. The resulting improved blood supply increases oxygen pressure, which activates and regenerates cells.

**PainSolv** also encourages improved calcium transport which increases absorption of calcium in bones and improves the quality of cartilage in joints, decreasing pain dramatically.

Application of the PainSolv therapy is based on more than 30 years of worldwide research carried out by renowned scientists. In addition there are many years of practical experience by thousands of physicians, based on many scientific studies on the degree of effectiveness of Pulsed Magnetic Field therapy.

**PainSolv** works by delivering pulsed electromagnetic wave forms into the body tissues of sufferers, which are clinically proven to have vigorous biological effects that can be beneficial for a wide range of conditions.

This is significantly better than all other devices which deliver interrupted wave forms as opposed to the continuous, patented bi-phasic PainSolv waveforms.

Constant wave low level lasers and static magnets have never been scientifically proven to penetrate the skin. But clinical research carried out for NASA proved that millisecond duration pulsed electromagnetic fields have the greatest beneficial effect on living tissues over any other energy form.

This is because the PainSolv patented pulsed waves pass through all types of body tissue including bone, without any reduction of wave strength. The device also works unhindered through clothing and specialist medical dressings, including plaster casts.



The **PainSolv** system encourages your body's self-healing capabilities by enhancing the efficiency of introducing essential chemicals and proteins into the blood stream, simultaneously increasing the oxygen content of your blood to help transport these vital ingredients to combat all manner of physical problems, with a gentle, non-invasive and painless therapy.

**PainSolv** will also encourage production of natural antioxidants to hamper and even stop the process of free radicals proliferation within the body.

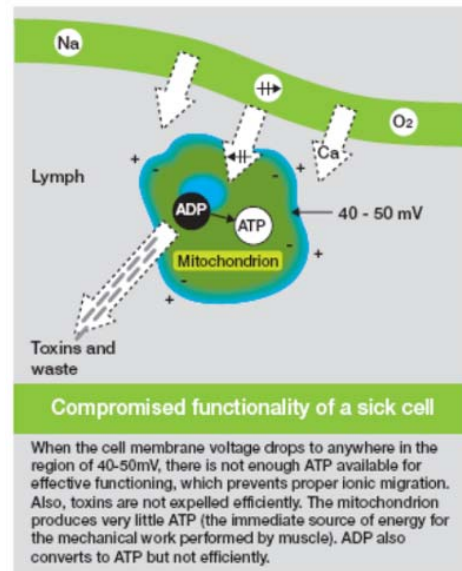
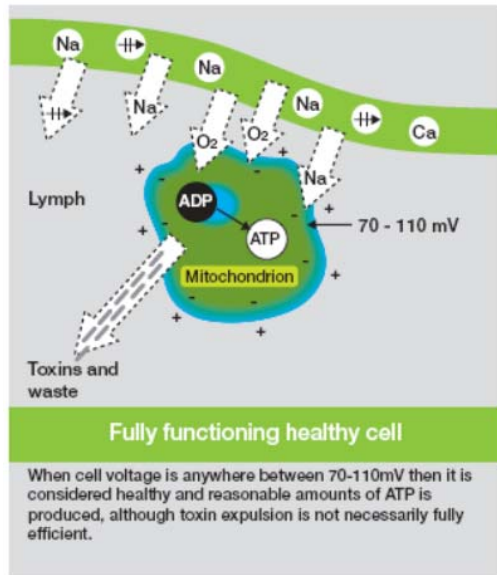
Free radicals are dangerous and can cause serious damage to your health as they cause almost all major diseases if unchecked.

Exposure to PainSolv wave forms creates a ripple effect, which activates biological processes in the body which will work on your health problem for approximately 8-10 hours at a time.

As there are no known side effects, it is safe to use the product as many times as you wish in succession.

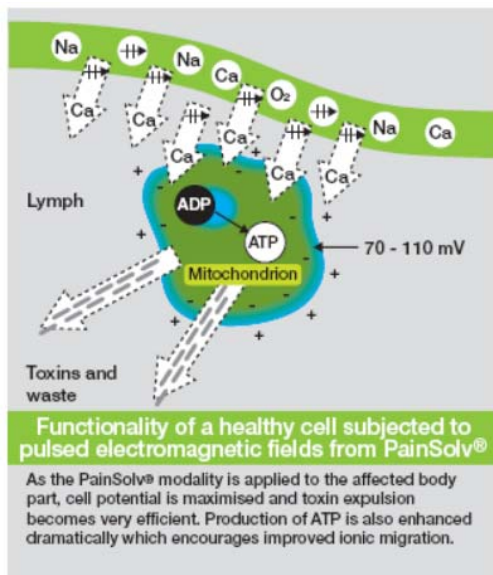
The only precaution you should take is not to drive or operate machinery for at least an hour after multiple applications.

## How PainSolv enhances cell function



Almost all illness is the result of impaired cellular function. A healthy cell operates at a voltage between 70-110mV in order to produce ATP molecules (Adenosine Triphosphate), which are vital for a healthy body. When someone suffers a trauma or illness of any kind then the cell function is compromised to varying levels, depending on the overall fitness and health of the individual concerned. In this type of occurrence, the body may need help to maintain the necessary levels of cell activity.

A sick cell, with voltage range between 40-50mV loses energy as there is not enough ATP available. Cancer cells for instance only have a voltage of 20mV and are incapable of regeneration, requiring almost 20 times more energy than healthy cells. Any stimulation or agitation of cell wall membranes can instigate a chain reaction of system recovery from deep within the body's own immune system to reduce the debilitating effects caused by sick cells.



**PainSolv** pulsed electromagnetic field therapy works by delivering pulse modulated bi-phasic wave forms into the body tissues of sufferers, penetrating tissue at a cellular level, normalising cell membrane potential.

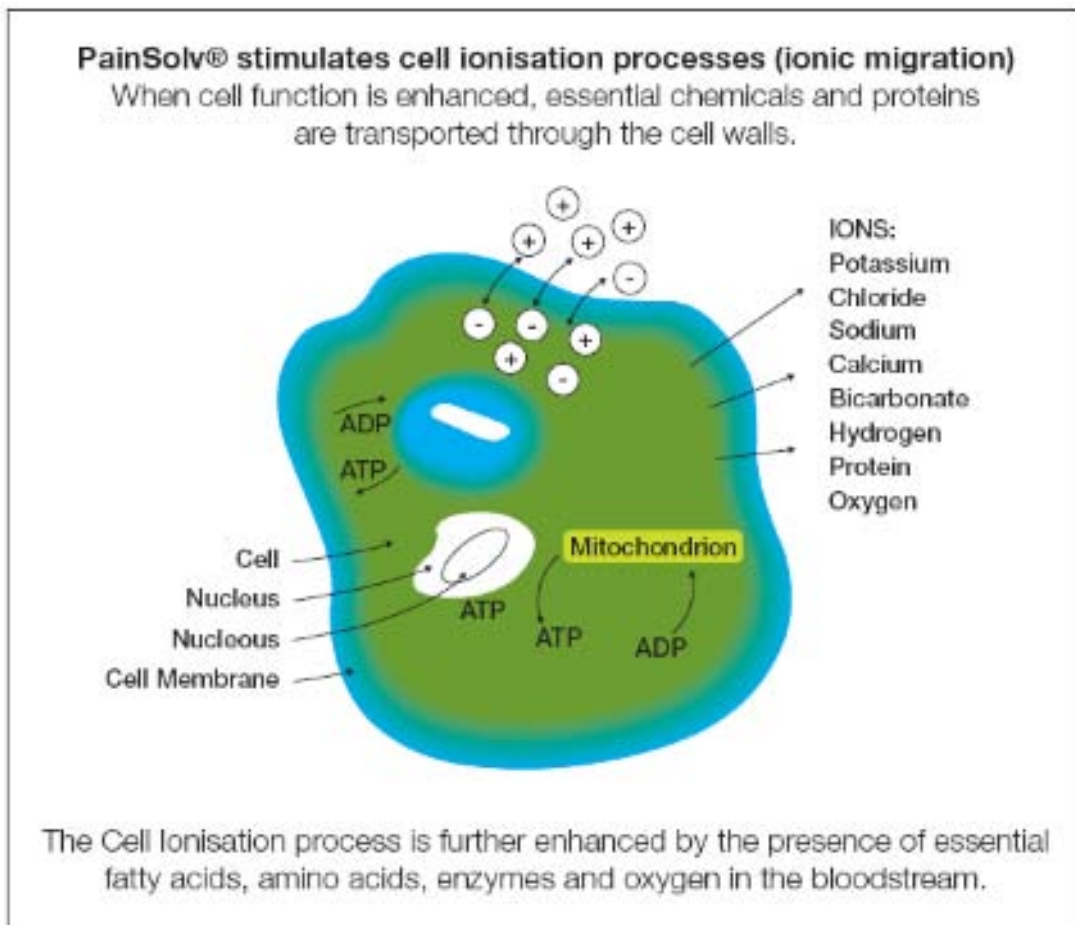
It is clinically proven that the pulse modulated non-ionising, non-thermal electromagnetic fields in the ELF (extremely low frequency) range produced by PainSolv can have vigorous biological effects that may be beneficial for a wide range of conditions.

This is significantly better than all other devices which deliver interrupted wave forms as opposed to the continuous, patented bi-phasic pulsed PainSolv waveforms.



## Calcium Transport (ionic migration)

The cell ionisation process is further enhanced by the presence of essential fatty acids, amino acids, enzymes and oxygen in the bloodstream. Pain Solv encourages ionic migration of essential chemicals and proteins to damaged tissue.



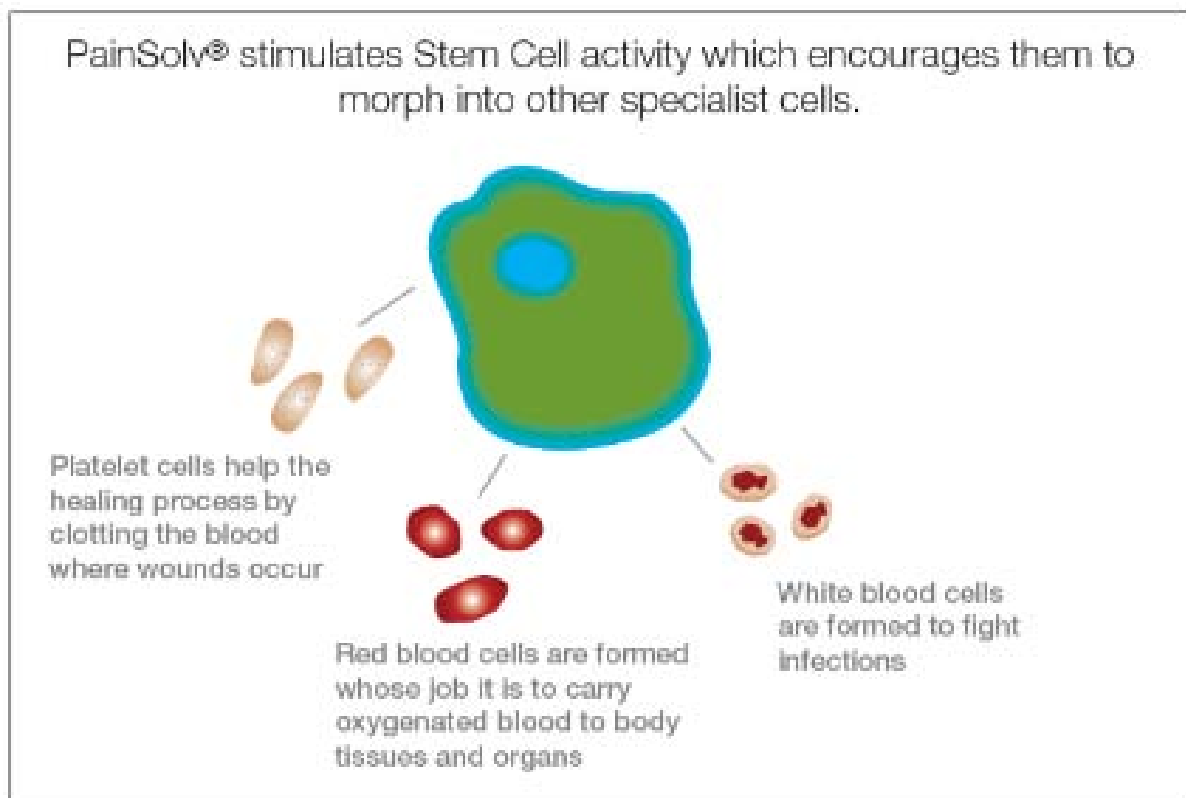
## Stem Cell Optimisation

When we are born, the cord blood found in the umbilical cord is rich in pluripotent stem cells. These cells have the ability to transform themselves into any type of specialist cells as part of the foetal development process leading to birth.

The significance of stem cells doesn't stop with new life however. They retain their ability to provide vital ingredients that work to protect our body throughout its life.

Stem cells can form platelet cells to help with healing processes. They can form red blood cells to carry oxygenated blood to our organs and other tissues vital for life. They can also form white blood cells to help fight infections.

PainSolv encourages stem cell activity by sending signals via the synaptic terminals with the electrical impulses activated by using the device.





**Cell Function Enhancement** using clinically proven technology

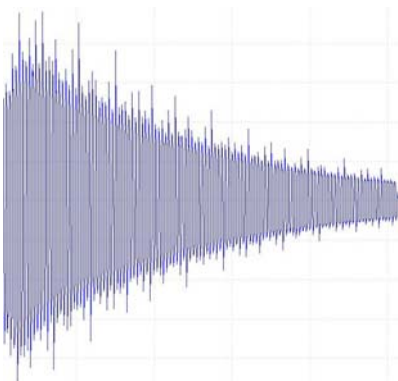
## Effective therapy for different health problems

It is not clinically effective to have a single-setting for all types of treatment that may be required and PainSolv have extensively researched and developed different patented software algorithms for specific areas of therapy. Each of these programmed algorithms differs in duration, intensity and/or frequency.



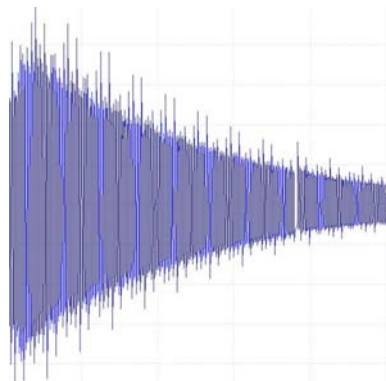
**3 in 1** medical device  
Pain Relief  
Wound Relief  
Stress Relief

### Pain



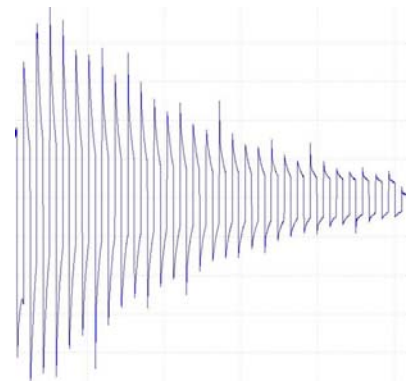
**PainSolv** pulsed electromagnetic therapy creates ionic migration of essential chemicals and proteins from cells into the bloodstream, by agitating the cell wall membranes, which subsequently encourages the release of neurochemicals, which occur naturally in the brain, into the bloodstream. These endorphins have powerful analgesic properties as do enkaphalins, an endorphin having opiate qualities, that occurs in the brain. PainSolv also helps enhance the cell utilisation process in the body which in turn stimulates improved blood circulation, blood oxygen content, cell growth and blood vessel formation.

### Wound



Ulcers are effectively wounds or dermal surface fissures that will not heal. Venous ulcers, diabetic foot ulcers and pressure sores (bed sores) fall into this category. **PainSolv** helps stimulate macrophage and pluripotent stem cell activity to prevent infection, accelerate scab formation and wound healing which is a significant part of the healing process. In bone fractures, affected tissues generate small electric charges which are greater than those of less stressed matter, so that osteoblasts (polarised bone-laying cells) are attracted to these areas and begin to build up extra bone material to counter the stress.

### Stress



The **PainSolv** algorithm works efficiently in optimising the functions of the central nervous system, particularly by producing changes in calcium transport and mediation of mitogenic response (stimulation of the division of cellular nuclei; certain types of immune cells begin to divide and reproduce rapidly in response to certain stimuli, or mitogens) which can encourage natural killer cell augmentation for fighting viruses and even pre-cancerous cells. This same setting can induce relaxation and reduction of stress levels which in turn can have a positive effect on those suffering from blood pressure problems.



**Cell Function Enhancement** *using clinically proven technology*

## Your Questions Answered

### What is PainSolv?

PainSolv is a brand new portable health management medical device, delivering pulsed field electromagnetic therapy that can be used with equal effect by consumers and practitioners alike.

### What is different about PainSolv?

PainSolv is unique in that it features three distinctly different treatment options for a wide range of Pain, Wound and Stress Conditions. As it is not clinically efficacious to have a single-setting for all types of treatment that may be required, PainSolv have researched and developed different patented software algorithms for specific areas of therapy. Each of these programmed algorithms differs in duration, intensity and/or frequency.

### How does PainSolv compare to TENS and other more well known treatments?

Unlike TENS, TSE and pain medications, PainSolv doesn't block pain gateways (that transmit pain signals to the brain). PainSolv is a drug-free alternative to pain, wound and stress management with no side effects and the unit is hand held and easily portable.

### How does PainSolv work on the body?

PainSolv pulsed electromagnetic field therapy works by delivering pulse-modulated bi-phasic wave forms into the body tissues of sufferers, penetrating tissue at a cellular level, normalising cell membrane potential. It is clinically proven that the pulse modulated non-ionising, non-thermal electromagnetic fields in the ELF (extremely low frequency) range produced by PainSolv can have vigorous biological effects that may be beneficial for a wide range of conditions.

### How does PainSolv compare to magnet therapy?

Constant wave low level lasers and static magnets have never been proven to penetrate the skin. Clinical research carried out for NASA proved that millisecond-duration pulsed electromagnetic fields have the greatest beneficial effect on living tissues over any other energy form. PainSolv does not contain magnets of any kind.

### Is PainSolv therapy easy to apply?

PainSolv can be used either by applying direct to the skin or through clothing and even medical dressings - even plaster casts. PainSolv penetrates up to 10cm through all types of body tissue without any refraction of the wave forms. Electromagnetic waves are the only energy that is not affected by water, of which the human body contains large amounts.

### Does PainSolv cause any side effects?

No, but the device should be used with caution if the sufferer is pregnant, suffers from epilepsy or has an implanted cardiac pacemaker.



**Cell Function Enhancement** *using clinically proven technology*

### **Does PainSolv therapy cause any pain during application?**

Not at all. However, if the device is being used to help promote natural healing of leg ulcers for instance, it is possible that the sufferer could feel some tingling sensations due to improved circulation. Using PainSolv will not cause any discomfort whatsoever.

### **Should I consult my doctor before using PainSolv?**

You only need consult your doctor before using PainSolv if you are in the first trimester of pregnancy or have an implanted cardiac pacemaker fitted; caution should also be used if you suffer from epilepsy.

### **Is PainSolv safe to use on any part of the body?**

You should never use the device internally as this could cause severe injury or even death. You should never allow children to use the device without supervision. You should not apply therapy directly onto the eyes. You should not apply the unit directly onto the carotid artery which is situated below the ear and behind the jaw on the neck.

### **What types of condition can PainSolv therapies treat?**

PainSolv can be used on a wide range of pain, wound and stress related conditions to great effect. Full details can be found in the User Guide.

### **How often can PainSolv be used without 'overdosing' on the therapy?**

You can use PainSolv as many times as you like in any one session. The device is programmed to deliver Pain, Wound or Stress therapies in pre-programmed cycles. We recommend that you do not apply the therapy whilst driving!

### **Are there any precautions I should take when using the PainSolv Medical Device?**

Whilst we are confident that PainSolv will help you gain relief from your particular condition, it is important that you read the instructions prior to use, paying particular attention to the list of precautions below:

- Do not use internally as this may cause serious damage to your health.
- It must not be used by cancer sufferers
- Must not be used by those being treated with chemotherapy for at least 5 months afterwards
- Must not be used by people with demand-type heart pacemaker implants
- Must not be used in the first trimester (3 months) of pregnancy, or if there is any chance you may be pregnant.
- Must not be used near sites of haemorrhaging
- Must not be used by haemophiliacs if haemorrhaging is active
- Must not be used by epilepsy sufferers
- Must not be used in conjunction with defibrillators
- Do not apply directly to eyes or eyelids
- To avoid cross-infection, never apply directly to broken skin of any kind (ulcers, wounds, etc)
- Do not apply directly to the carotid artery (upper part of neck directly behind the ears)



**Cell Function Enhancement** *using clinically proven technology*

### **Are there any general usage guidelines I should be aware of?**

Yes, there are some general pointers for safe use which are listed below:

- Children should not use the device unless supervised by an adult
- Do not drive for at least 15 minutes after a therapy session
- Do not operate machinery for at least 15 minutes after a therapy session
- Do not leave the unit adjacent to sources of excessive heat
- Do not operate in the immediate vicinity of flammable gases
- Do not use on aeroplanes until the crew advise that electronic equipment can be used safely
- Do not immerse in liquid of any kind
- Do not use cleansing lotions on the device; use wet wipes or dry cloth only
- Avoid dropping the unit onto hard surfaces wherever possible
- Attempting to open the unit may result in serious injury or death.

### **What do I do if I am not sure about any of the above guidelines?**

If you are in any doubt about any of the medical precautions listed and how they may apply to you, please call 0116 270 3443 or email [info@mediconcepts.co.uk](mailto:info@mediconcepts.co.uk) for immediate advice.

### **Does PainSolv have exactly the same results for everyone using the device?**

Medical conditions affect individuals differently. Treatment periods can vary from user to user and can also depend on how long you have suffered from your condition. We therefore advise you to follow the Conditions Application Guidelines on pages 16-33 in the supplied Instruction Manual for best results.

### **Does PainSolv have official recognition or certification?**

PainSolv therapy has undergone extensive clinical trials. The product is CE Marked and certified as a Medical Devices Directive Class IIa medical device, to the standards applied by EC council Directive 93/42/EEC. PainSolv is RoSH compliant.



# Complete Care Package



Our mission is to bring you drug-free relief from Pain, Wounds and Stress conditions using clinically proven technology to assist with cell function

PainSolv is a subsidiary of **Mediconcepts Ltd**, a company proud of its United Kingdom heritage. Our products are designed and produced with pride, exclusively in the United Kingdom by Mediconcepts.

**PainSolv is a CE Marked Class IIa Medical Device** which meets the requirements of the Medical Devices Directive 93/42/EEC. Certificate of Conformity Number **CE 524889**.



Only available through Officially  
Authorised Distributors



## Information about Mediconcepts

**Mediconcepts** hold Certificate Number **MD 524888** and operate a Quality Management System which complies with the requirements of **ISO 13485:2003** for the following scope:

**The sales, manufacture and distribution of pulsed electromagnetic field therapy devices for cell function.**